

NEWFOUNDLAND & LABRADOR, CANADA

FILMING LOCATIONS





Tongat Mountain National Park



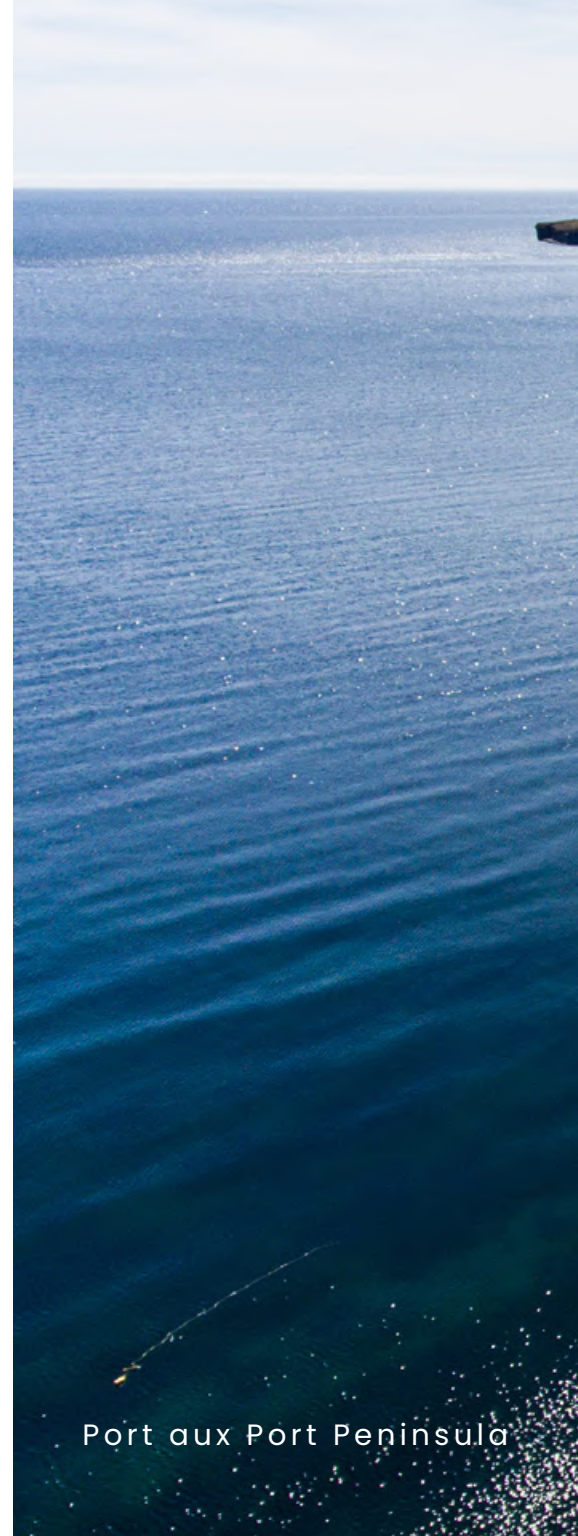
Spillar's Cove, Bonavista



Western Brook Pond Fjords, Gros Morne



Corner Brook



Port aux Port Peninsula





Downtown St. John's





NO PARKING
TO CORNER



Rose Blanche



Jerry's Nose





Tablelands, Gros Morne National Park



Cape Spear

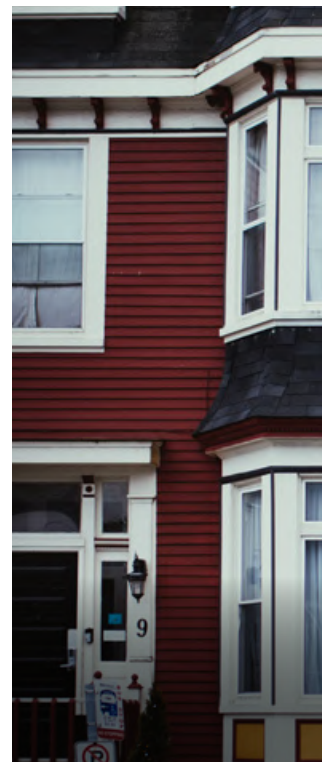




Tickle Cove



Downtown St. John's





Downtown St. John's



Downtown St. John's



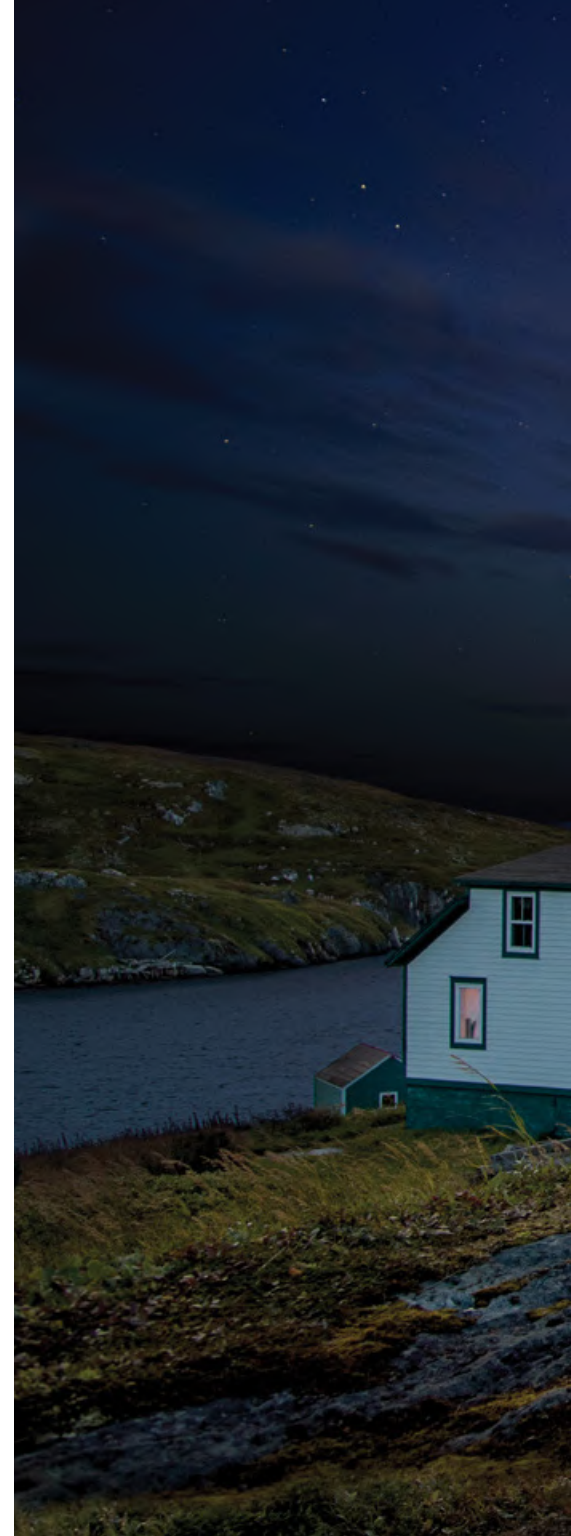
The Battery



L'Anse aux Meadows National Historic Site



Blow Me Down Provincial Park





Battle Harbour





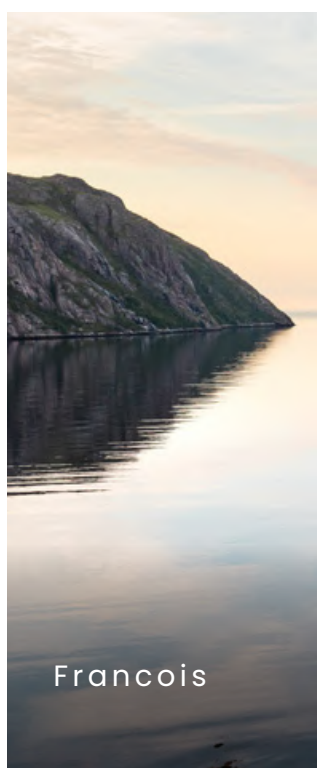




Torngat Mountain National Park



Downtown St. John's



Francois



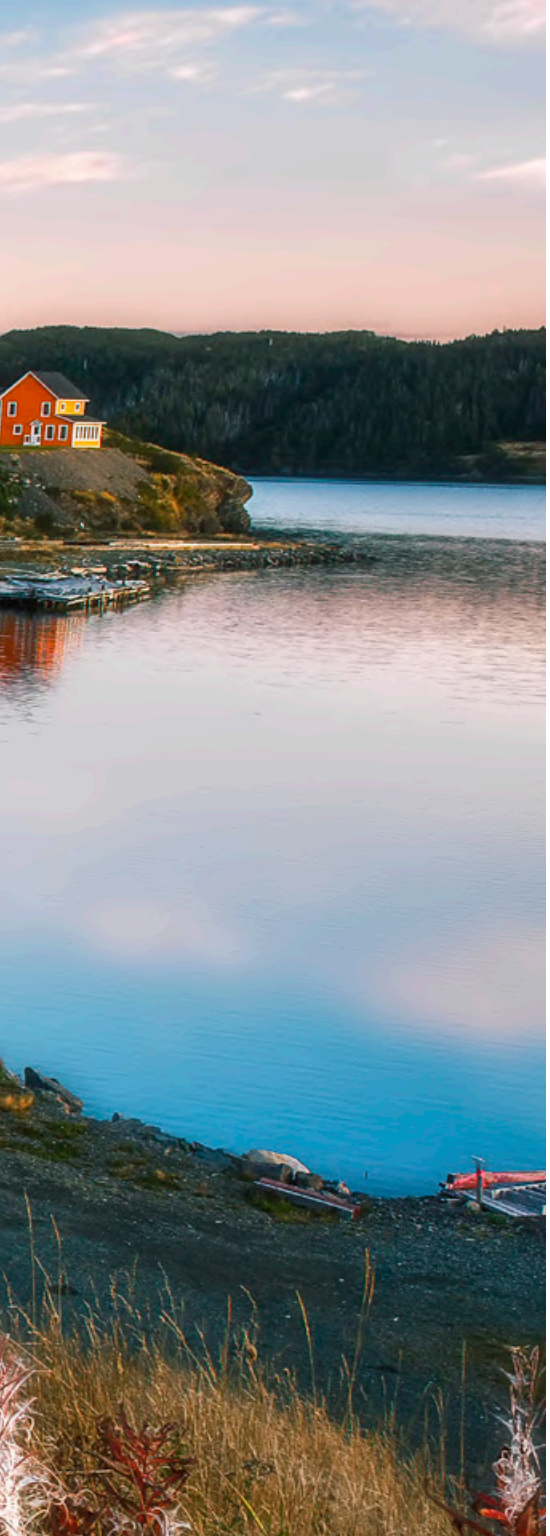
The Battery



Salvage



Trinity



Berry Head Arch



Chance Cove





Green Point



Dungeon Provincial Park, Bonavista





Forest



Battle Harbour



Salmon Cove Sands





Newfoundland and Labrador has long been known for scenic vistas and old-world charm. As Canada's most easterly province, this place possesses an extraordinary character as unique and colourful as its history and landscape. Those that shoot here come to love it. Our real and authentic locations, along with our creative culture and helpful nature, endear all who visit. The province has 17,000 kilometres of coastline, from rocky cliffs to sandy beaches.

Today a wide range of television series and features are shot where the land meets the sea. With competitive incentives (30% all-spend and 40% labour based tax credit) professional crews, access to equipment and infrastructure, make Newfoundland and Labrador your next location destination.

We invite you to explore all the advantages our province has to offer. Please contact Laura at the Newfoundland and Labrador Film Development Corporation / Film Commission for more information.

70 Portugal Cove Road, Suite 201
St. John's, Newfoundland and Labrador
Canada A1B 2M3

info@picturenl.ca

1.709.738.3456

1.877.738.3456

picturenl.ca



picturenl.ca
NewfoundlandLabrador.com

